

FEATURES

- Type Diesel-electric locomotive
- Builders English Electric, Vulcan Foundry, Newton-le-Willows, England
- Railroad British Railways
- Gauge 4 ft. 8½ in.
- Top speed 100 mph



The twin engines each had an output of 1,650 hp.

BRITISH RAIL CLASS 55 DELTIC

From the 1960s, the Deltics became a familiar sight on Britain's East Coast Mainline, hauling fast passenger services between London, Leeds, and Edinburgh. Their livery varied over the years, but they were painted in British Rail's blue and yellow colors from 1966. By 1982 the Deltics had served their time. They were succeeded by the UK's Intercity 125 High Speed Trains.



74

1964 NEW YORK CITY SUBWAY R32

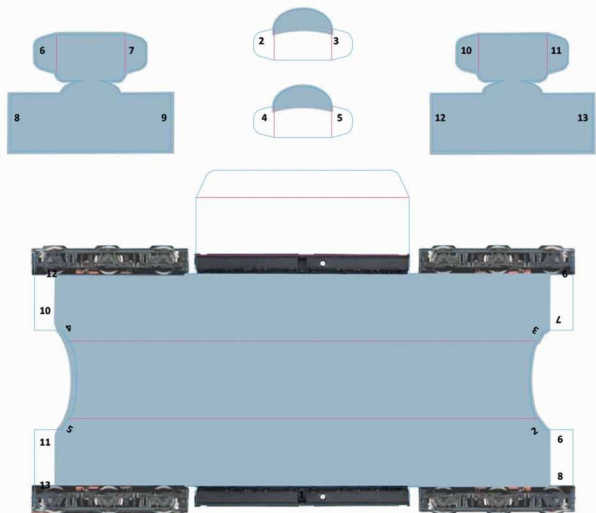
USA

New York City's subway is one of the world's most celebrated underground networks. Its cars are powered by a third rail on the track, which provides motors with 600V of DC current. The R32s were introduced in 1964 and some are still in use half a century later.



R32s' shining, fluted stainless-steel bodies earned them the nickname "Brightliners."

75



1964 NEW YORK CITY SUBWAY R32

