

biwin.co.uk

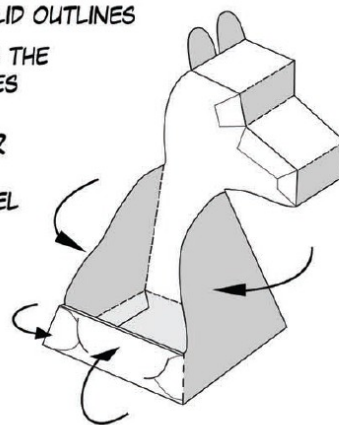
3D ERNIE ILLUSION

CUT OUT, FOLD AND ASSEMBLE (SEE DIAGRAM)

• CUT ALONG THE SOLID OUTLINES

• FOLD ALONG THE DOTTED LINES

• INSERT TABS 1 & 2 INTO THE SLOTS ON THE BACK PANEL



STAND APPROX 1 METRE AWAY, CLOSE ONE EYE AND LOOK AT THE CREATURE'S EYES. MOVE AROUND TO SEE THE ILLUSION...

