

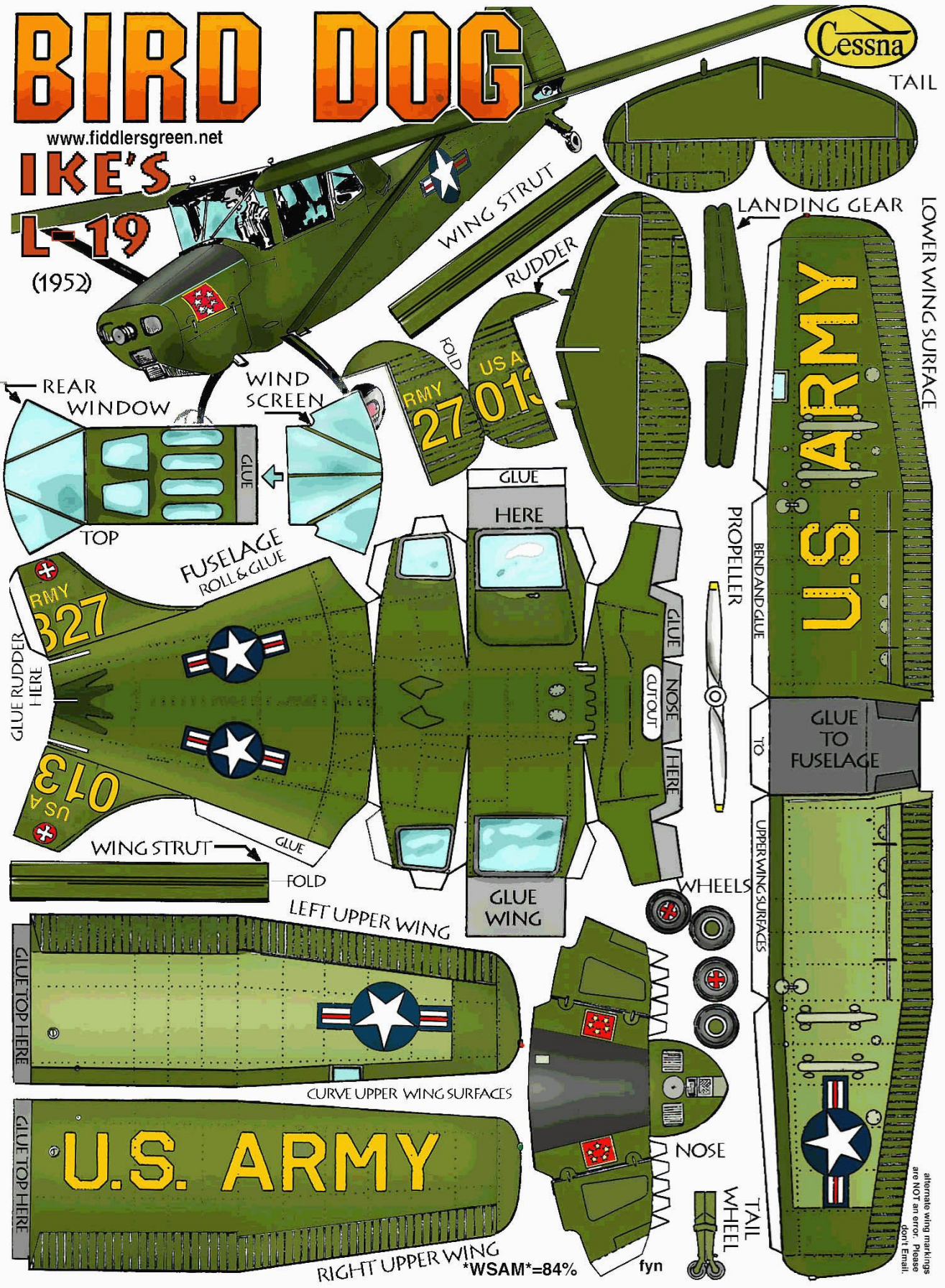
BIRD DOG

www.fiddlersgreen.net

IKE'S L-19 (1952)



TAIL



REAR WINDOW

WIND SCREEN

TOP

FUSELAGE
ROLL & GLUE

GLUE RUDDER
HERE

WING STRUT

FOLD

LEFT UPPER WING

GLUE TOP HERE

CURVE UPPER WING SURFACES

GLUE TOP HERE

U.S. ARMY

RIGHT UPPER WING
WSAM=84%

WING STRUT

RUDDER

FOLD

USA
RMY
27 013

GLUE
HERE

GLUE

NOSE
HERE

GLUE
OUT

GLUE
WING

WHEELS



NOSE

TAIL

WHEEL

fyn

LANDING GEAR

LOWER WING SURFACE

U.S. ARMY

GLUE TO
FUSELAGE

TO

UPPER WING SURFACES

PROPELLER



BEND AND GLUE

alternate wing markings
are NOT an error. Please
don't Email.